

Nokia Customer Care

6(a) - Baseband Troubleshooting

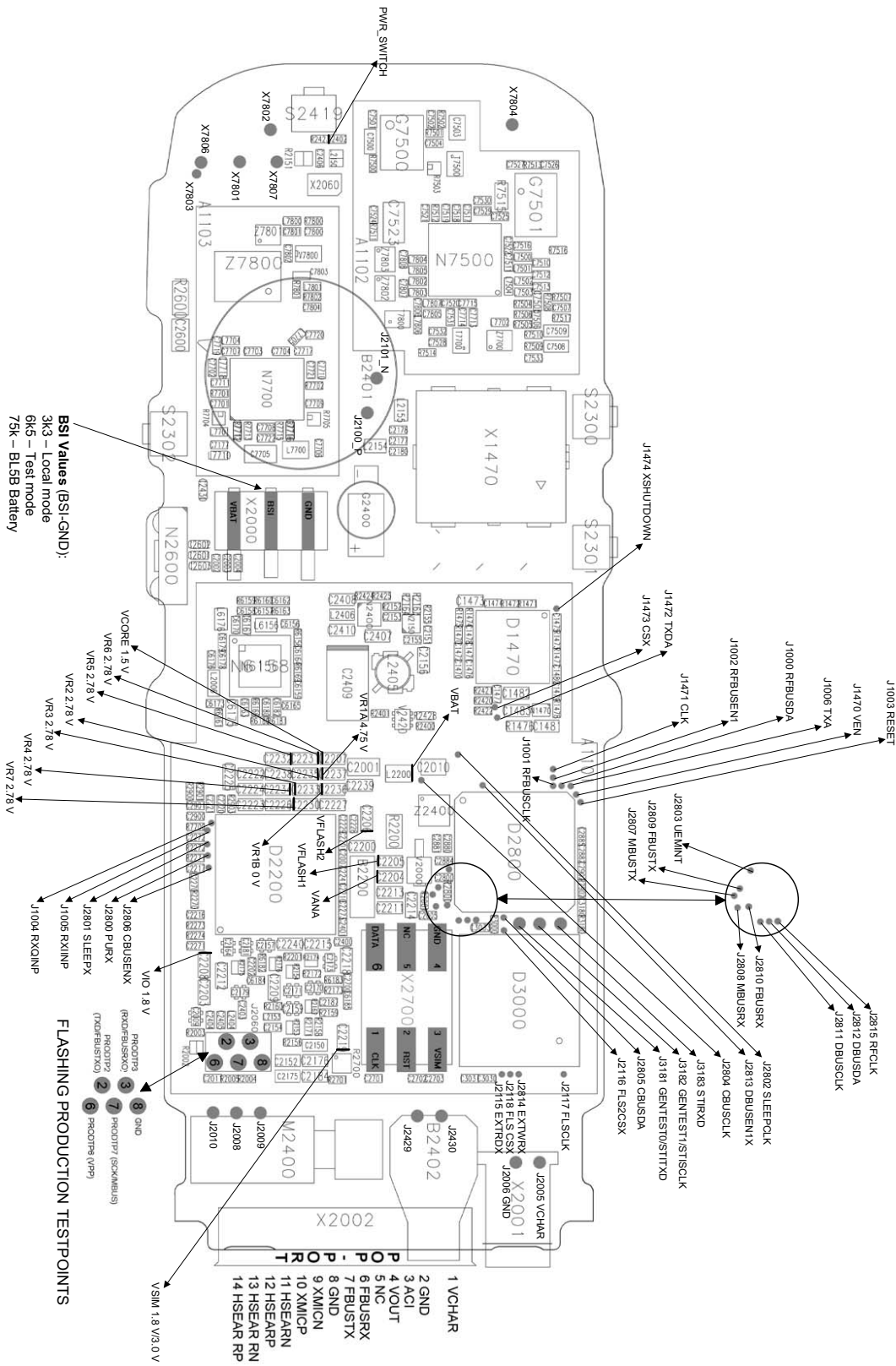
This page has been intentionally left blank.

Table of Contents

	Page No
Test Points	5
Troubleshooting	6
Top level flow 1	6
Top level flow 2	7
Phone is dead 1	8
Phone is dead 2	9
Flash faults 1	10
Flash faults 2.....	11
Phone is jammed 1	12
Phone is jammed 2	13
Charger	15
SIM Card	16
Audio faults 1	17
Audio faults 2	18
Audio faults 3	19
Audio faults 4	20
Earpiece	21
Display faults 1	22
Display faults 2.....	23
Keypad faults 1	24
Keypad faults 2	25
Camera faults 1.....	26
Camera faults 2.....	27
Self test	28

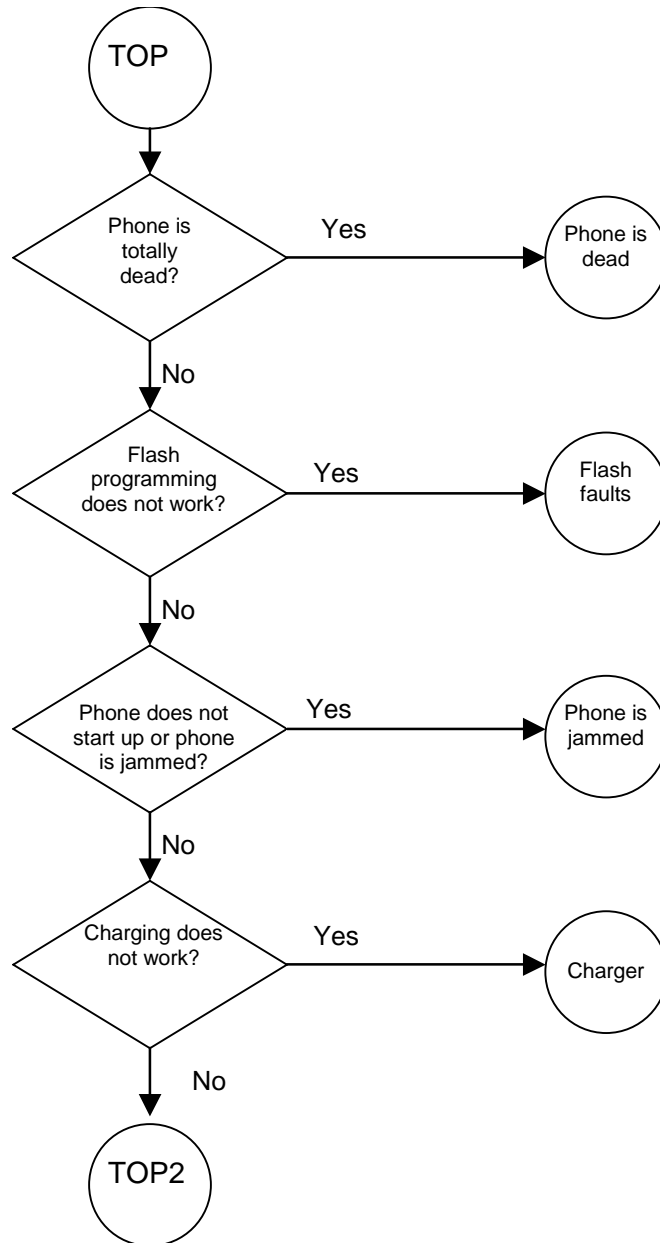
This page has been intentionally left blank.

Test Points

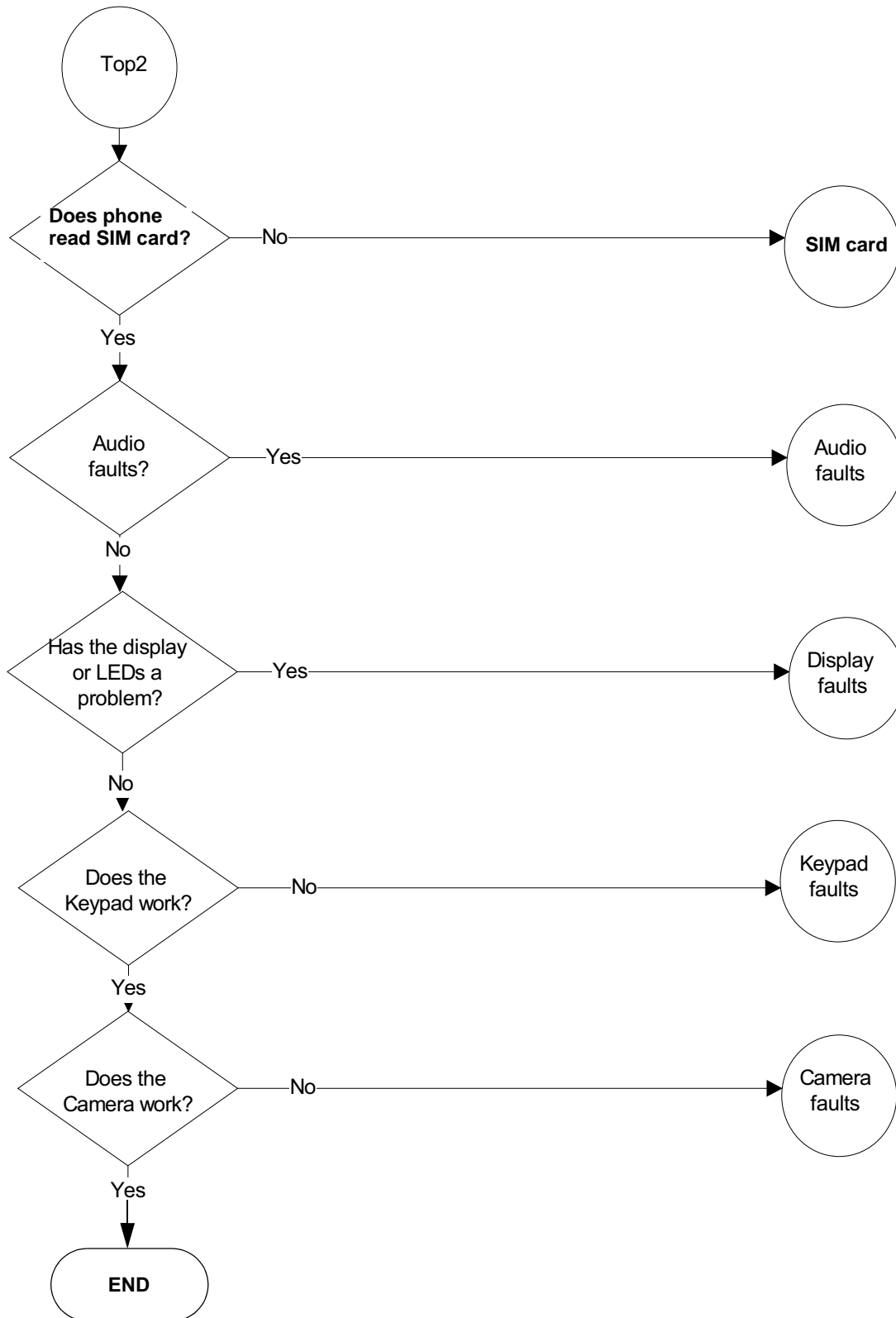


Troubleshooting

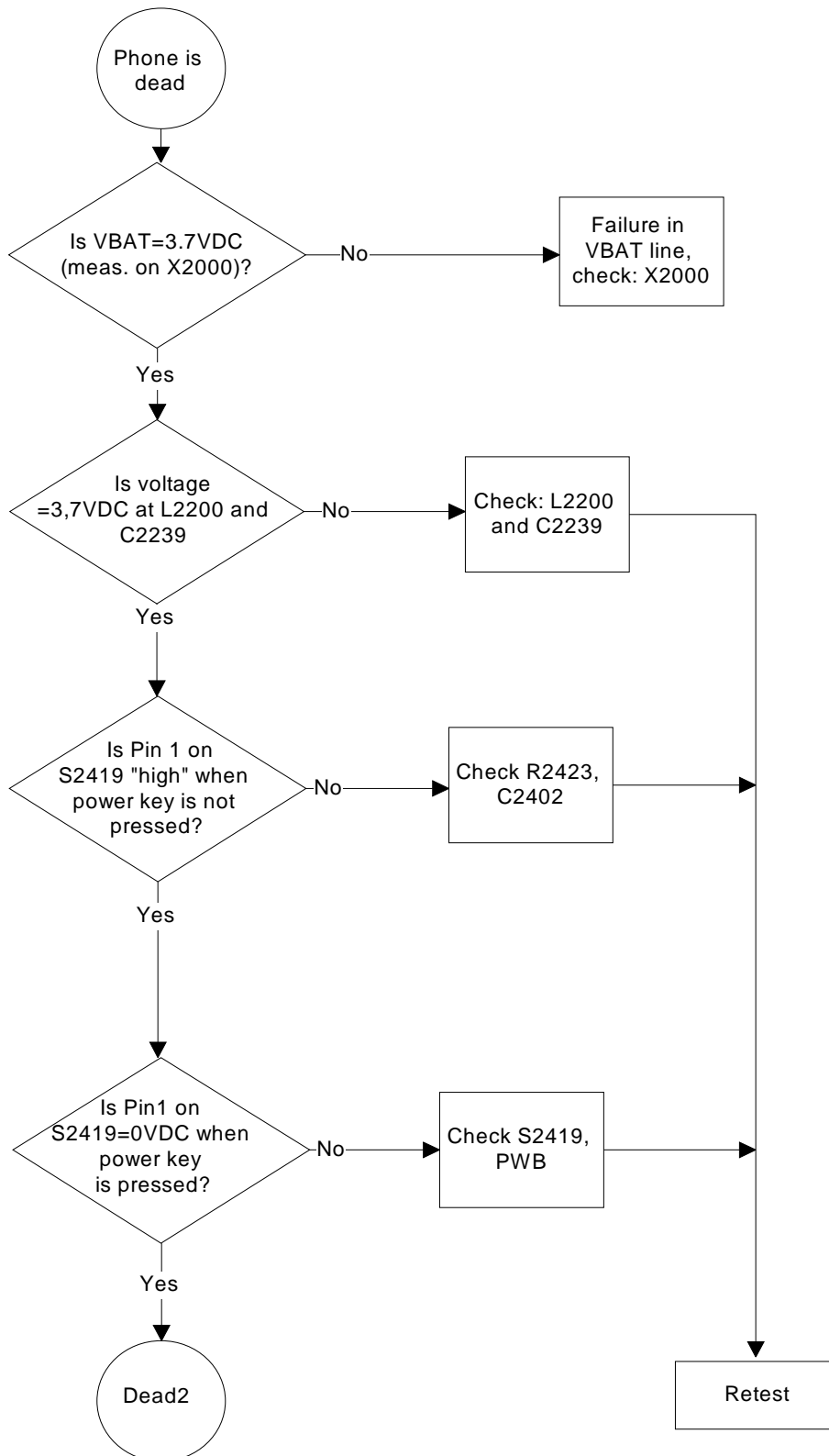
■ Top level flow 1



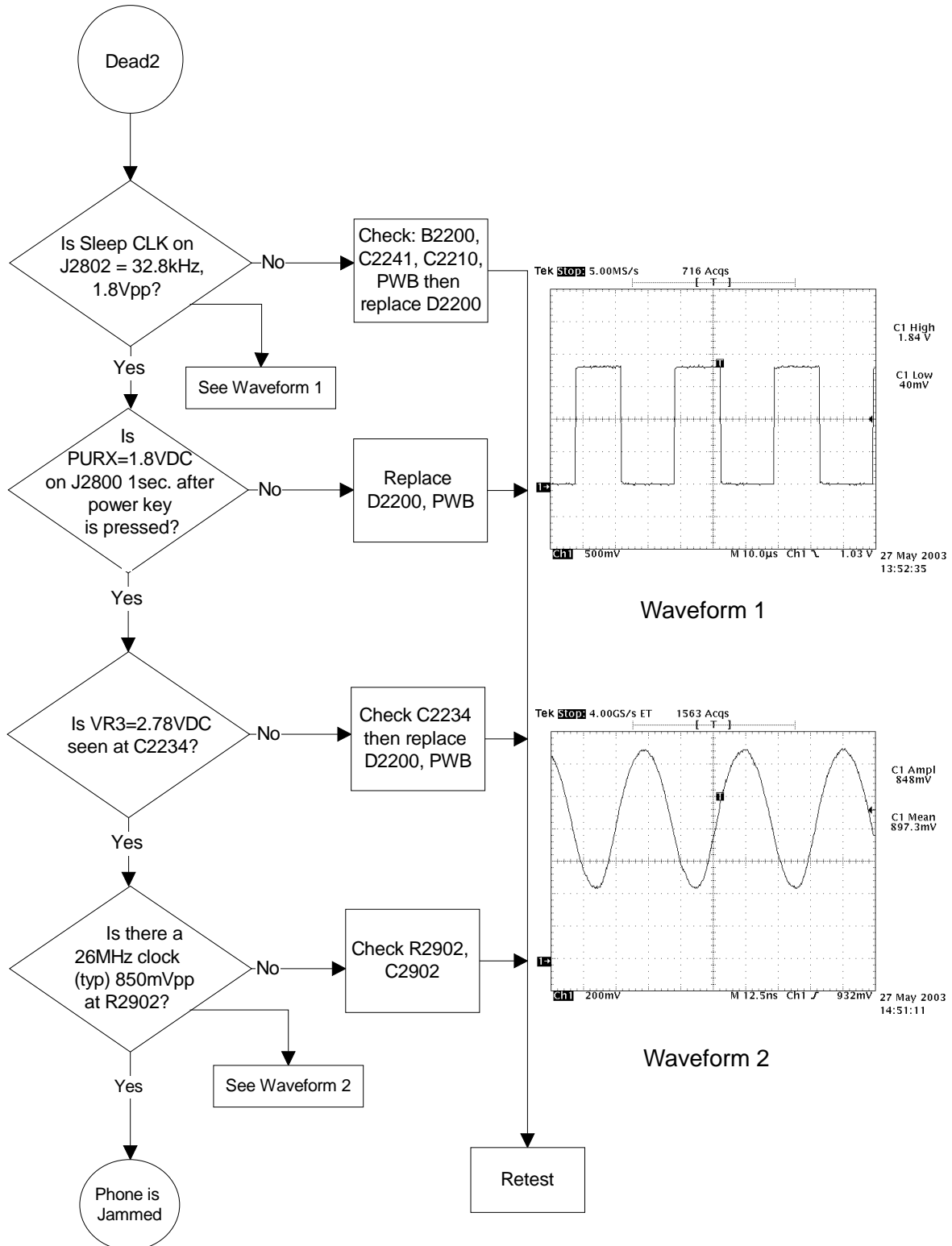
■ **Top level flow 2**



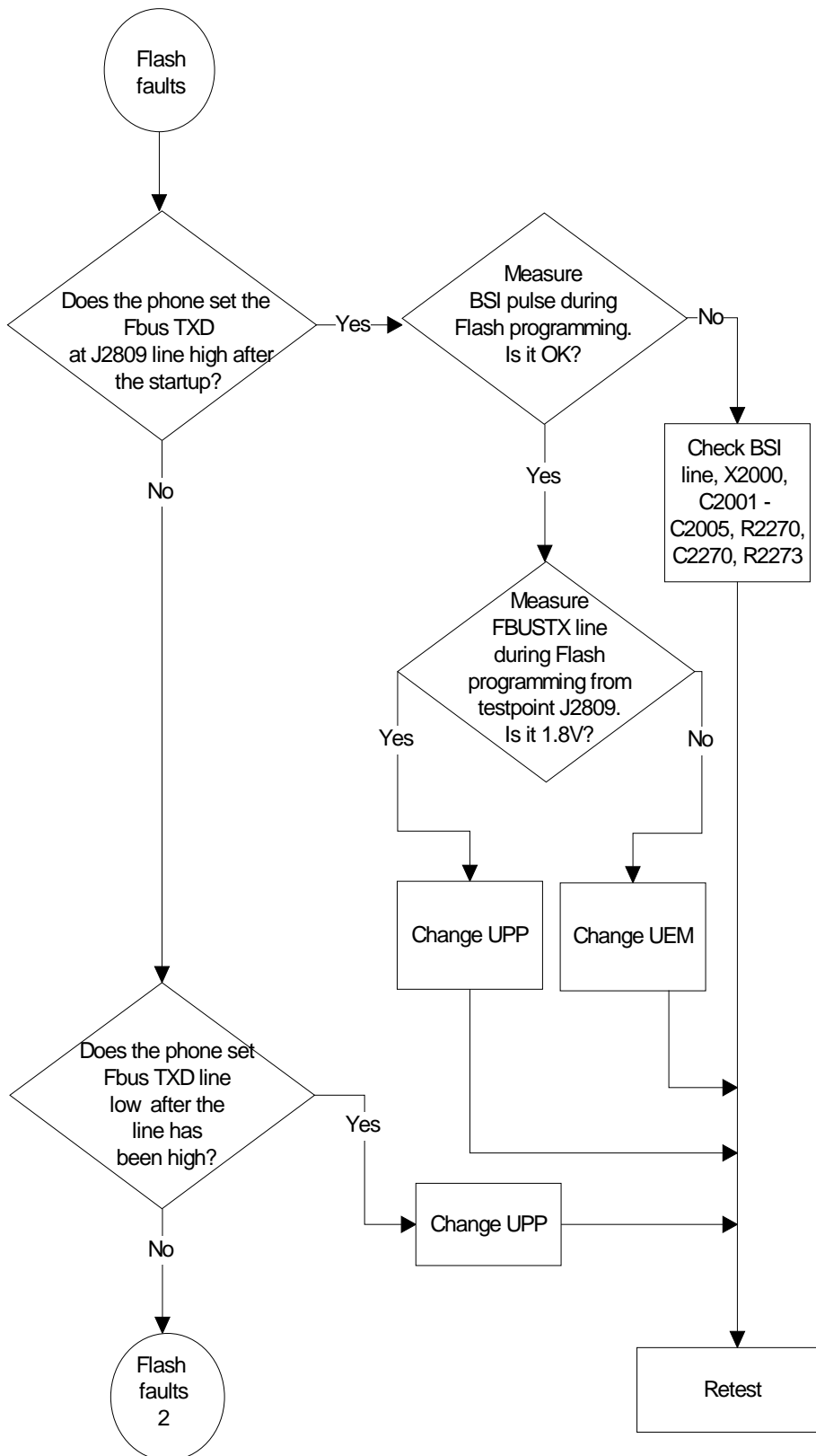
■ Phone is dead 1



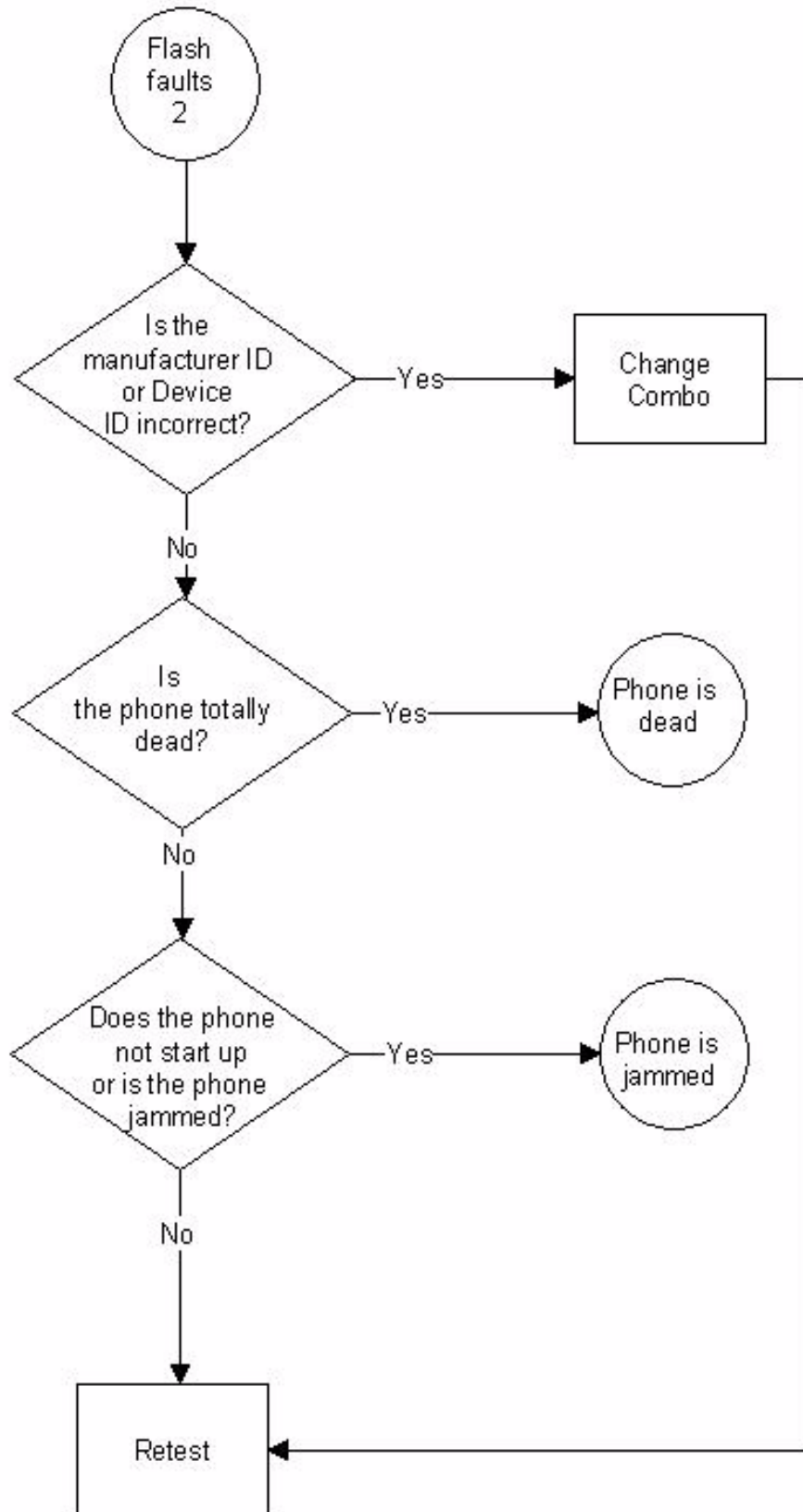
■ Phone is dead 2



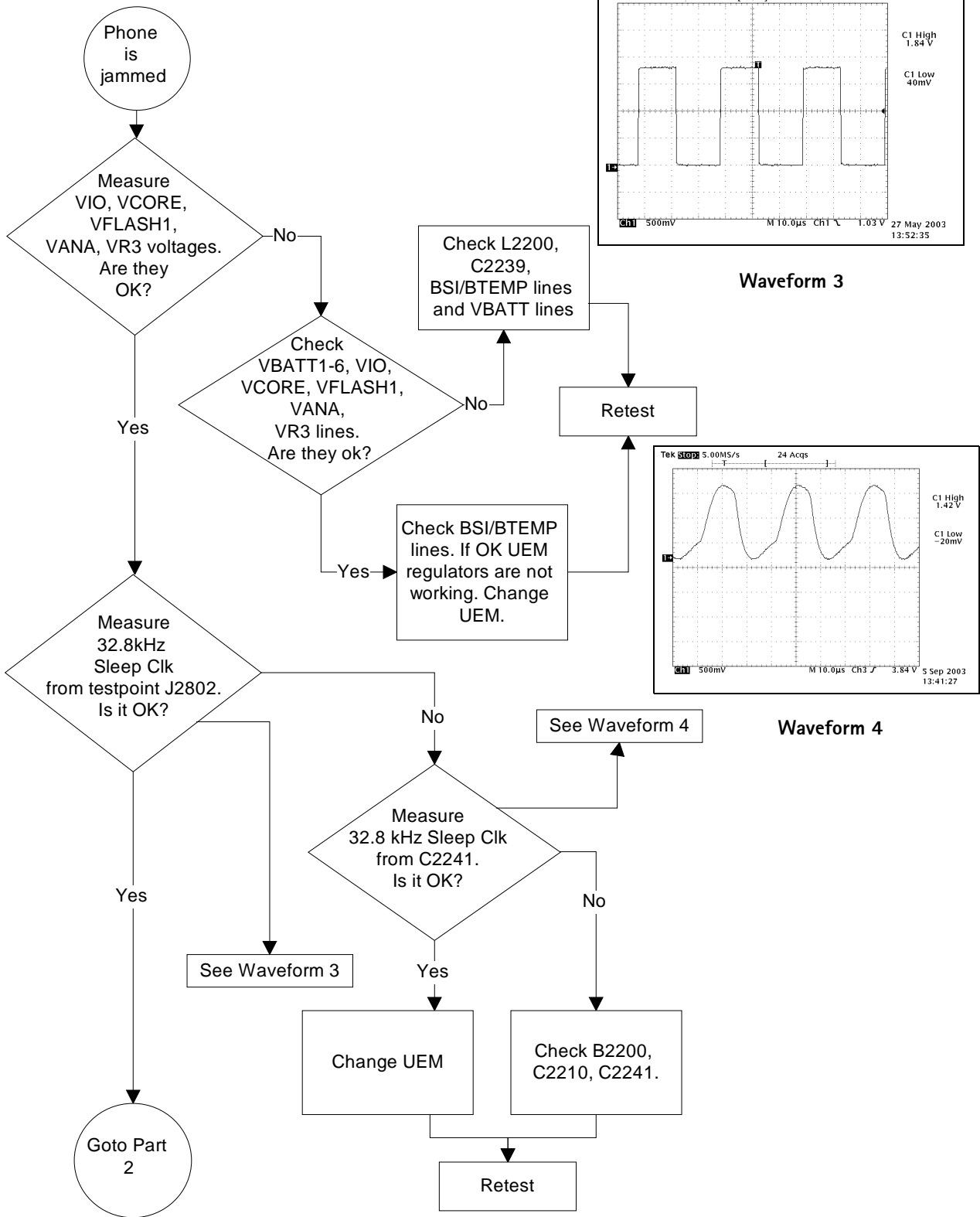
■ Flash faults 1



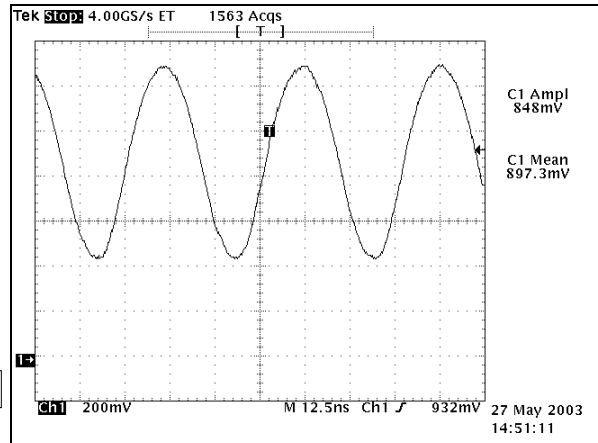
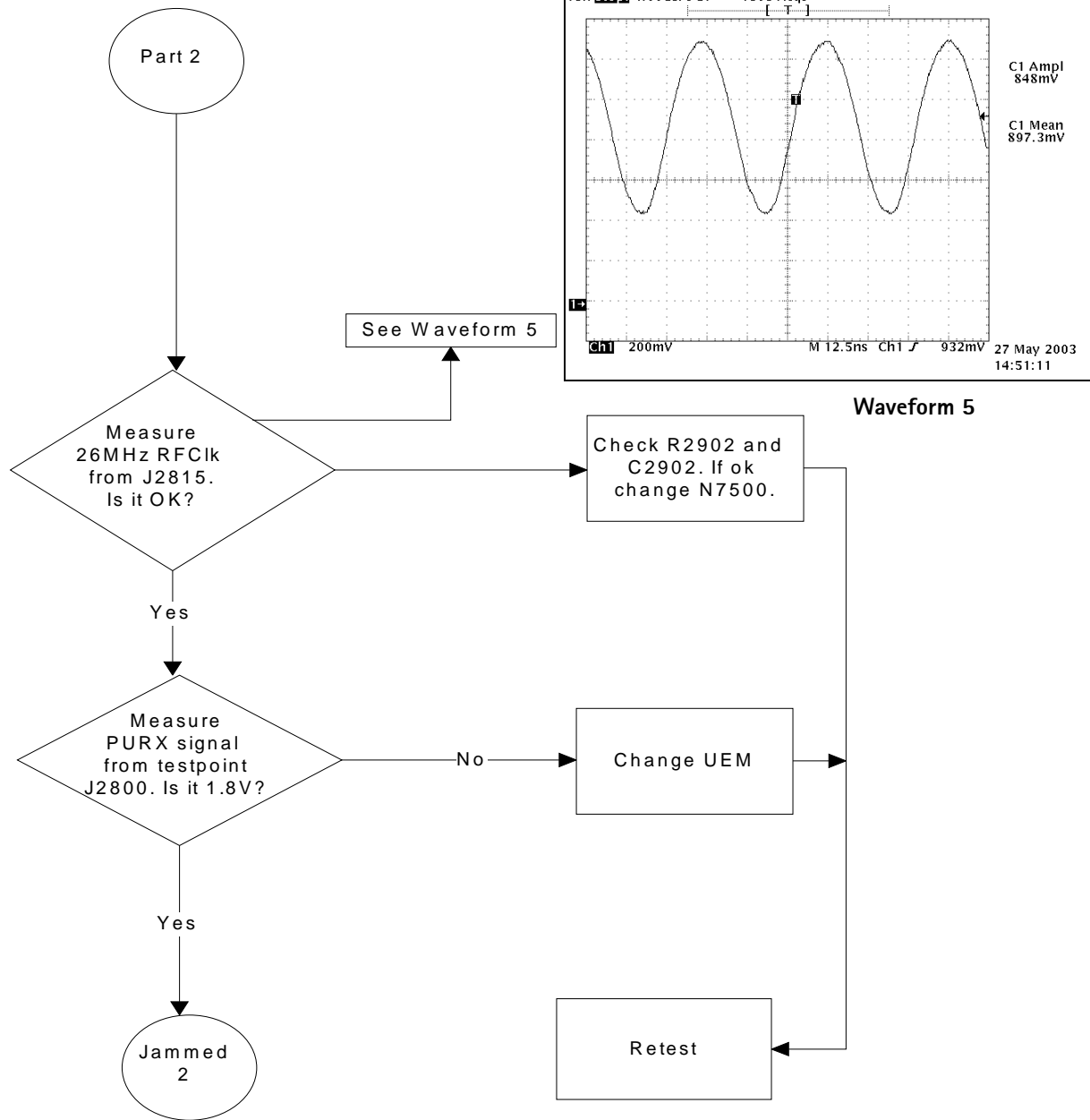
■ **Flash faults 2**



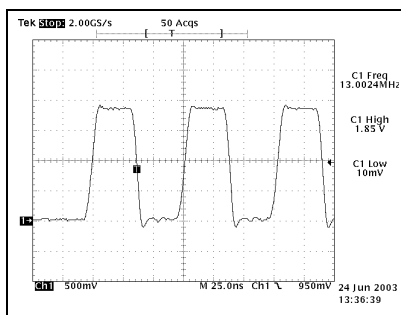
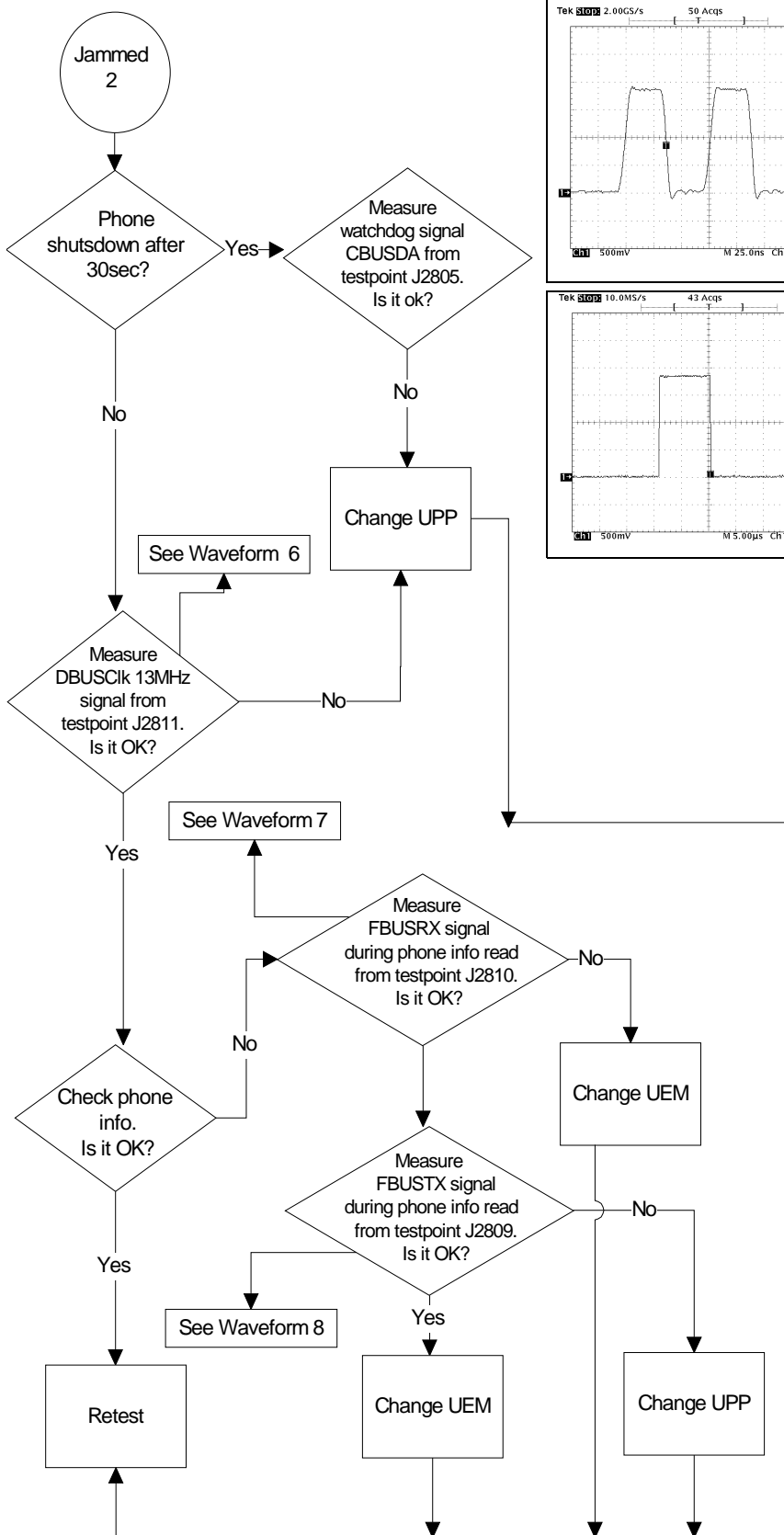
■ Phone is jammed 1



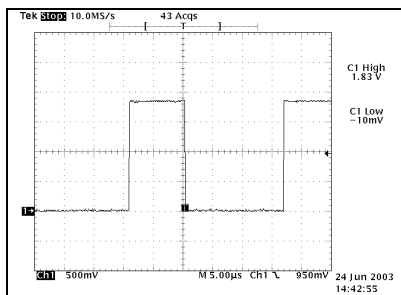
■ Phone is jammed 2



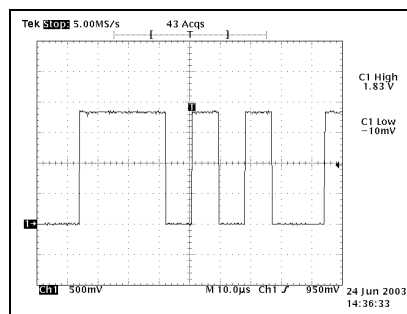
Waveform 5



Waveform 6

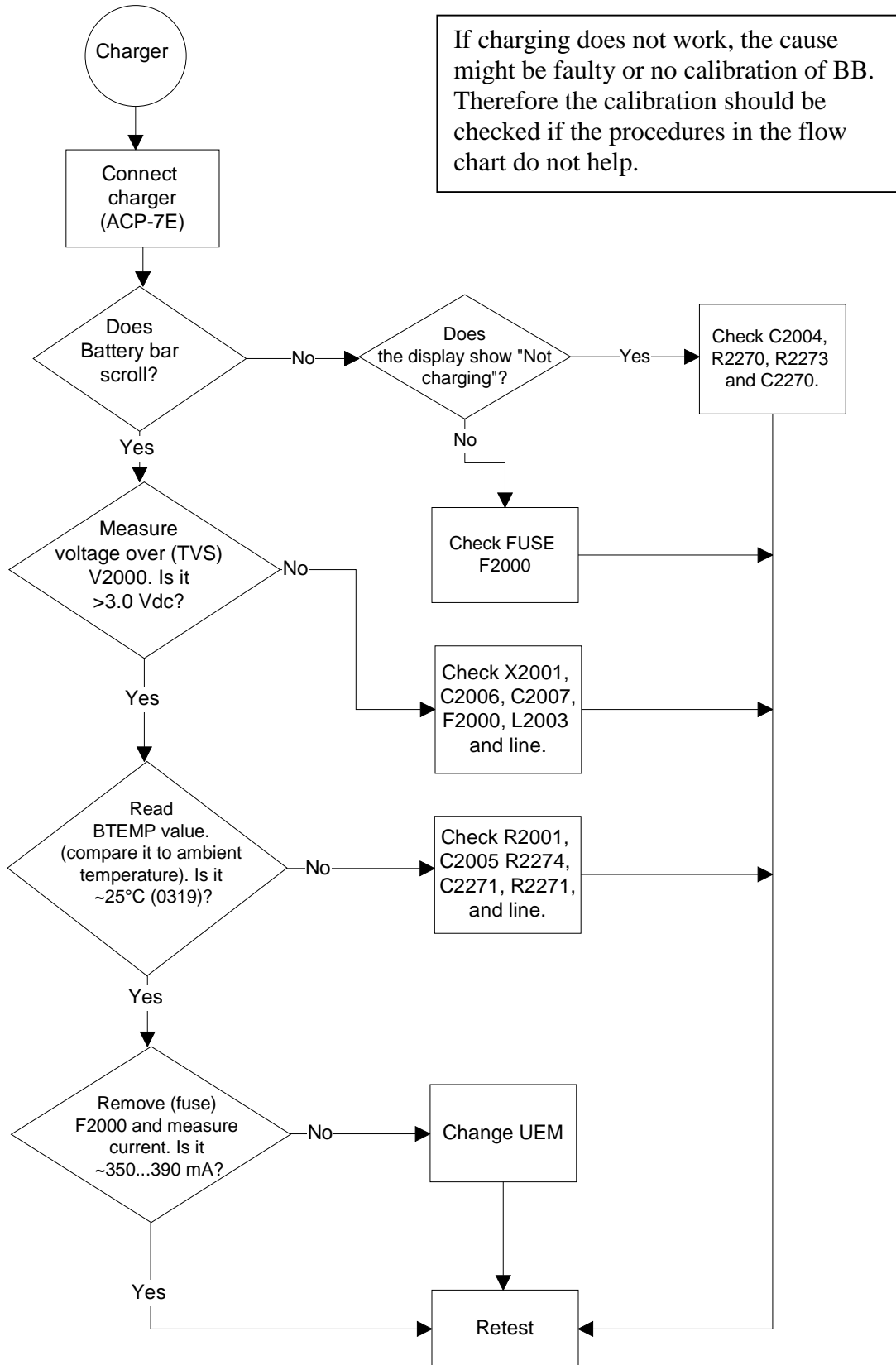


Waveform 7

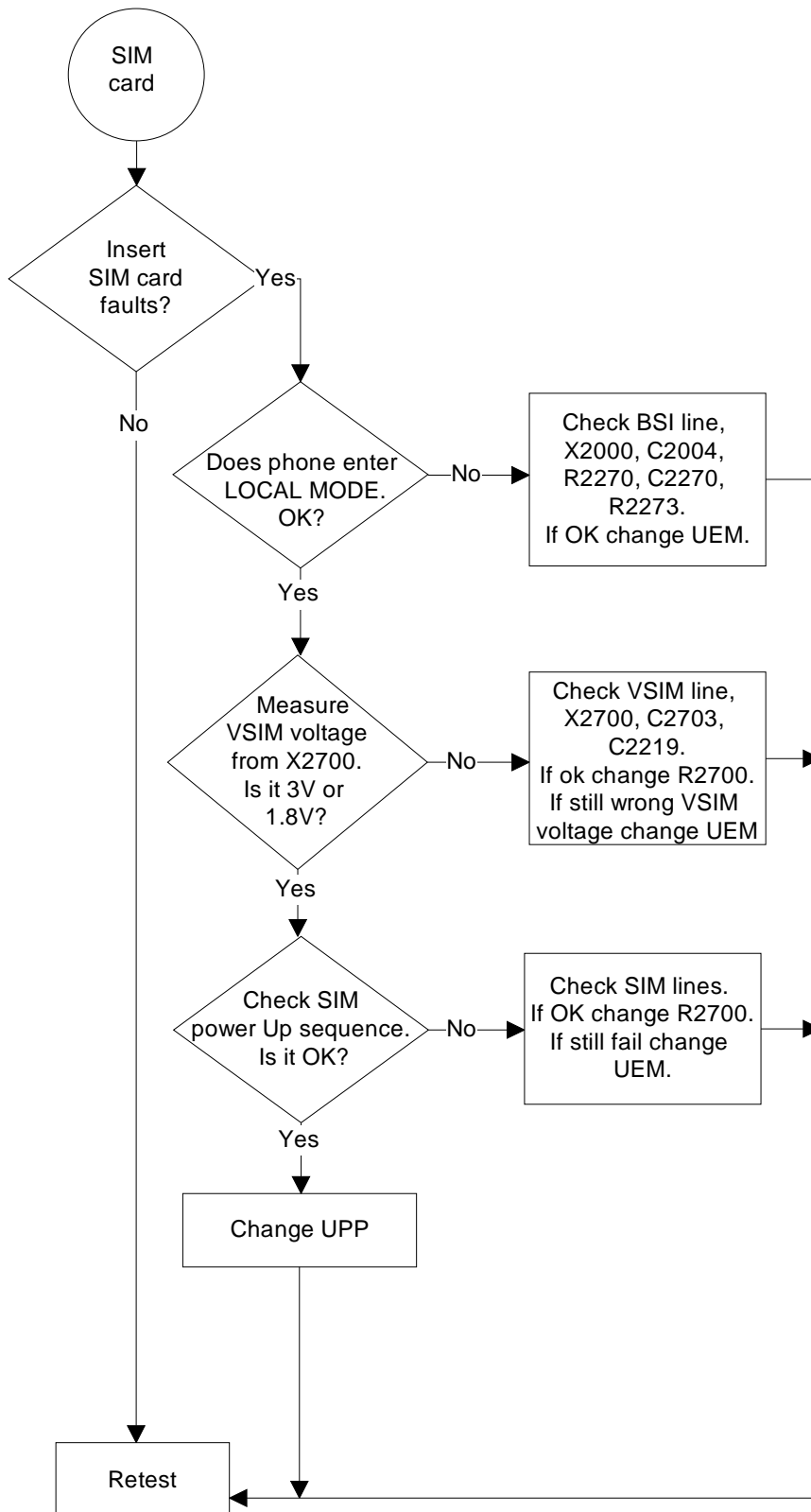


Waveform 8

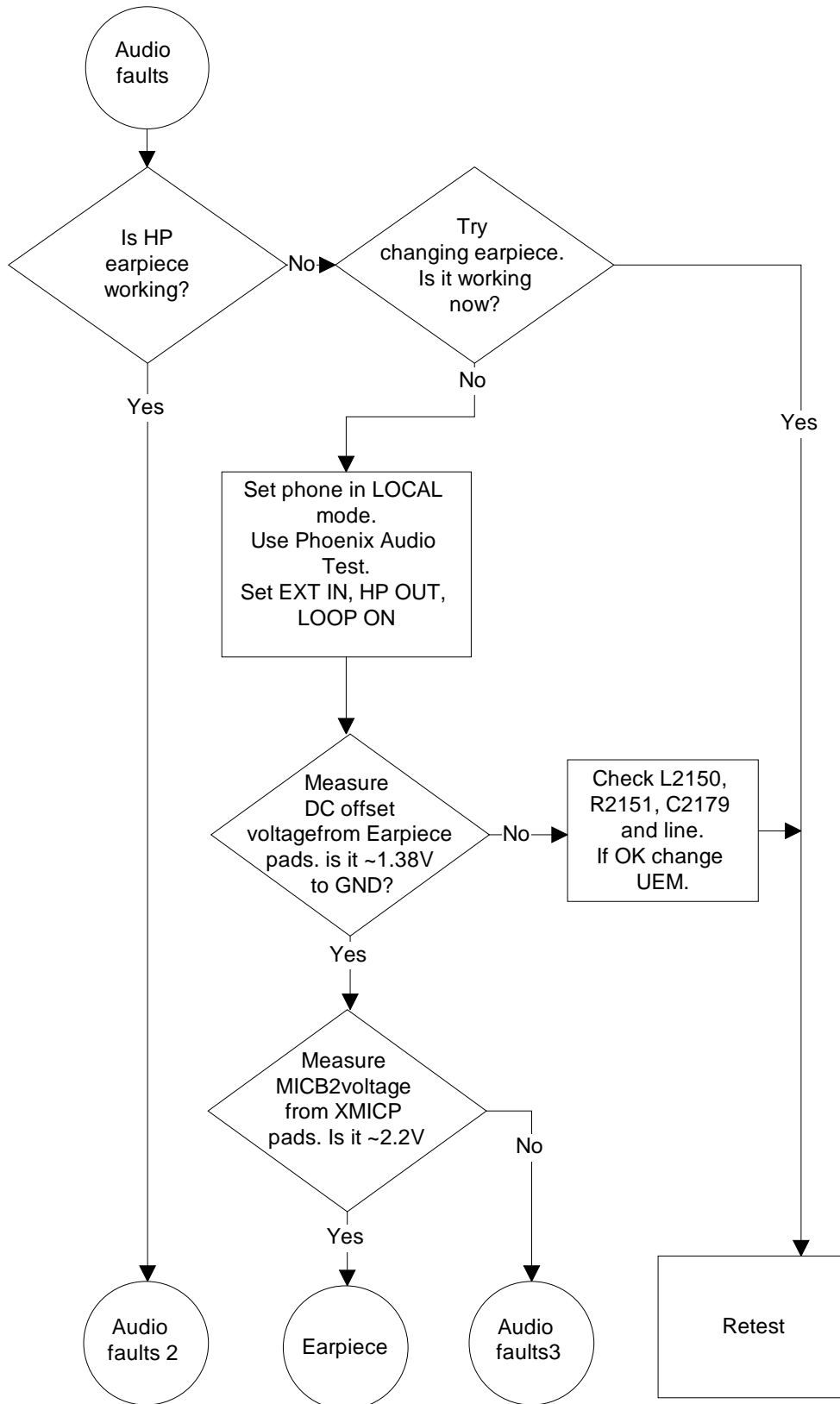
■ **Charger**



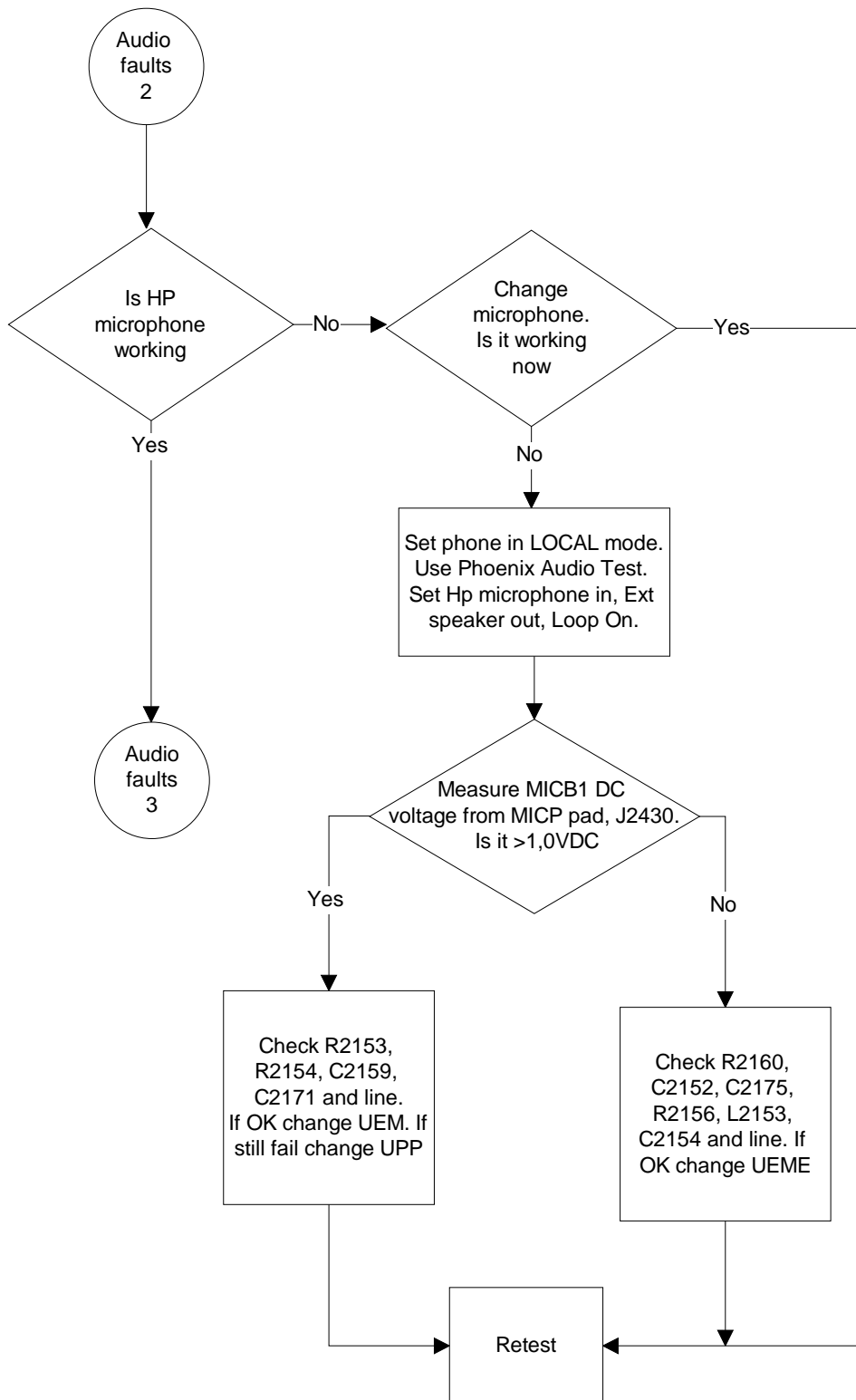
■ **SIM Card**



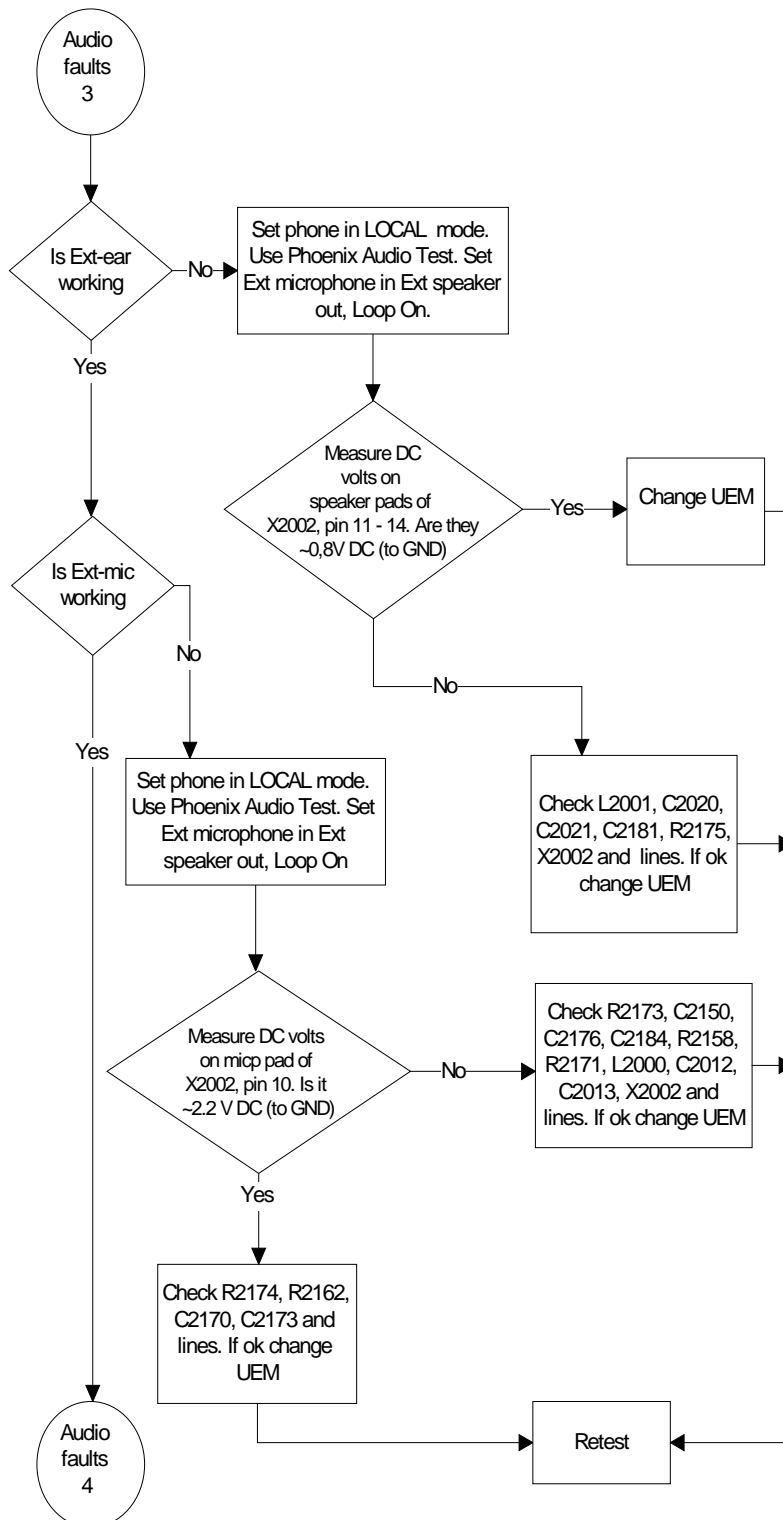
■ **Audio faults 1**



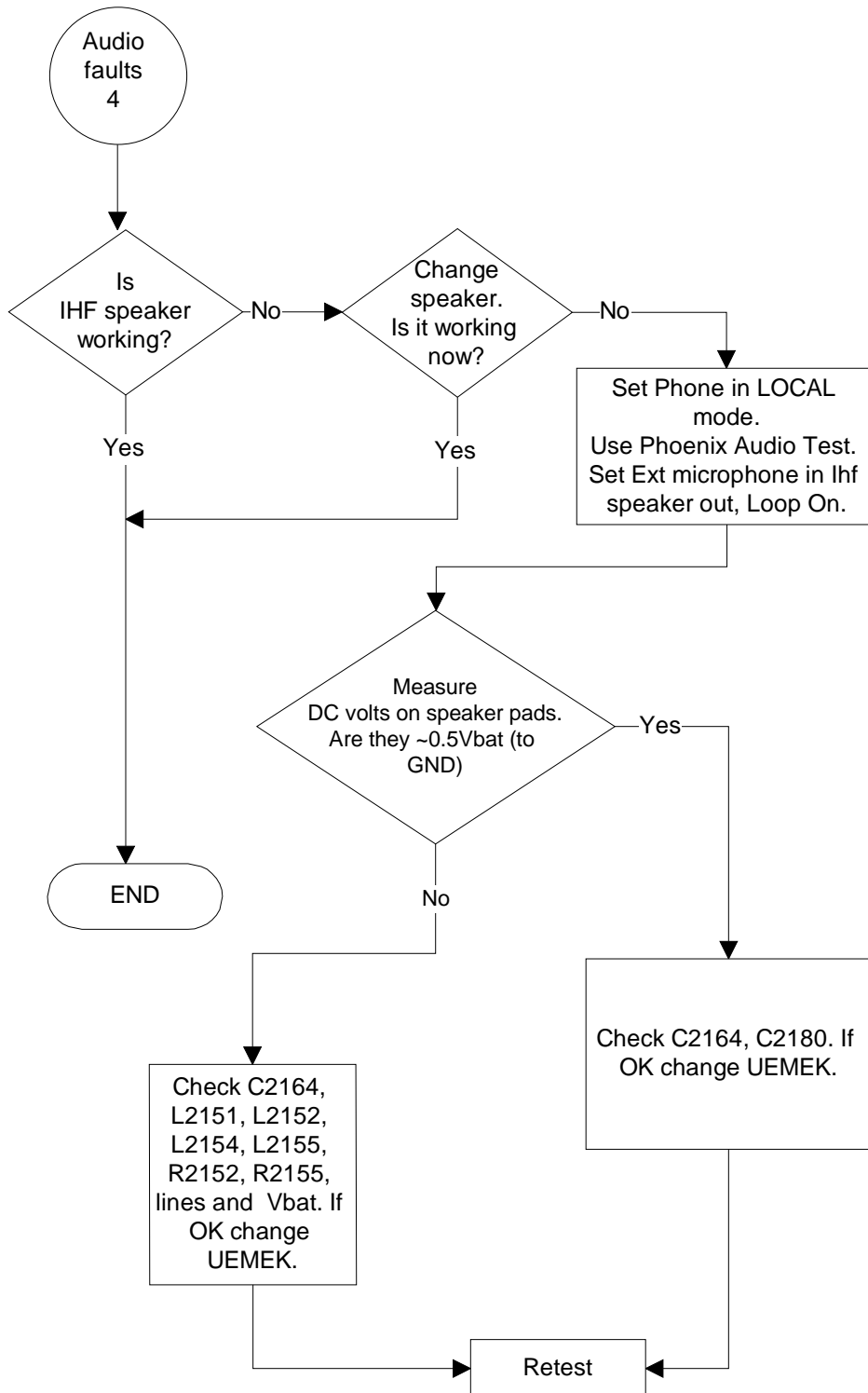
■ **Audio faults 2**



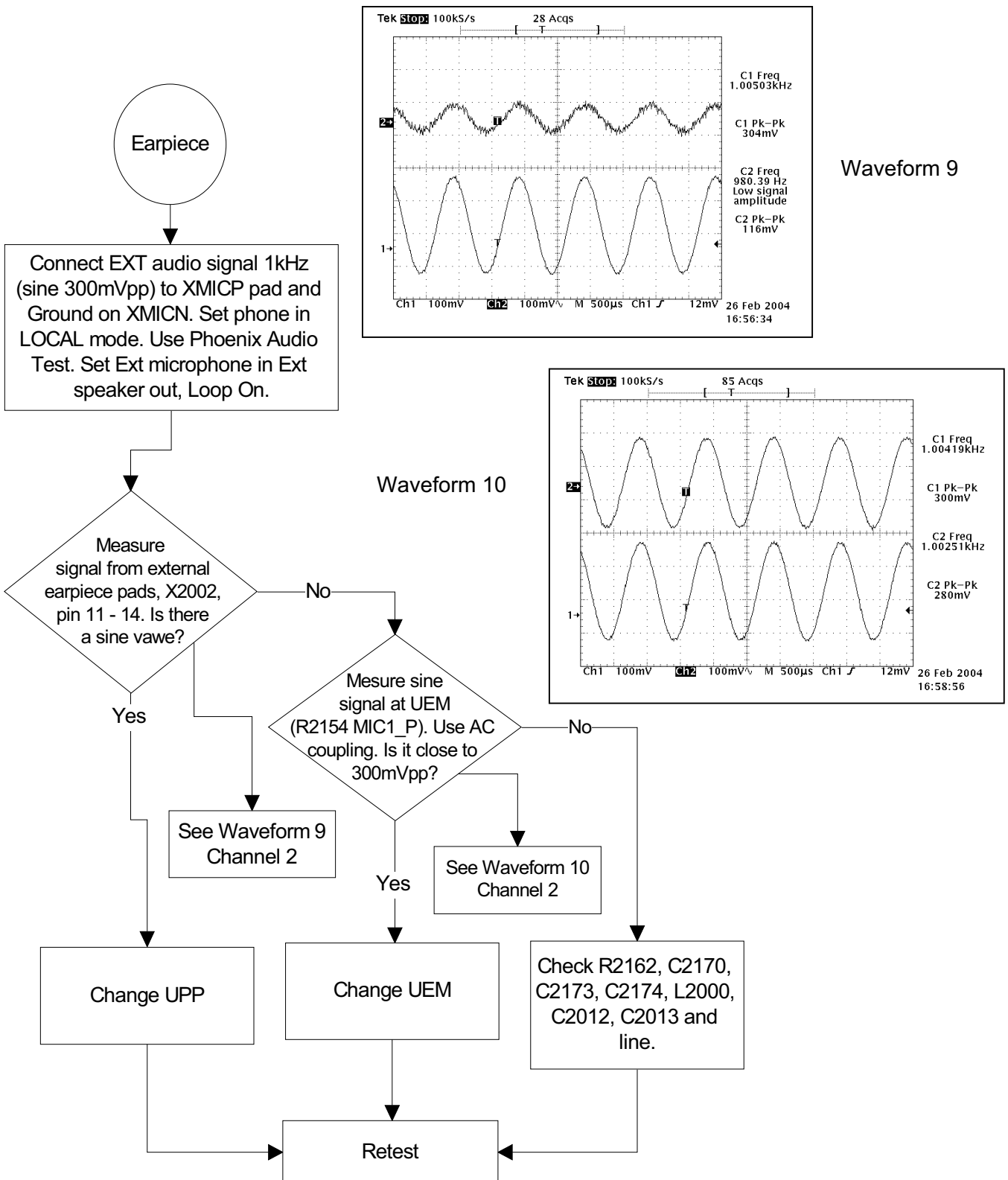
■ **Audio faults 3**



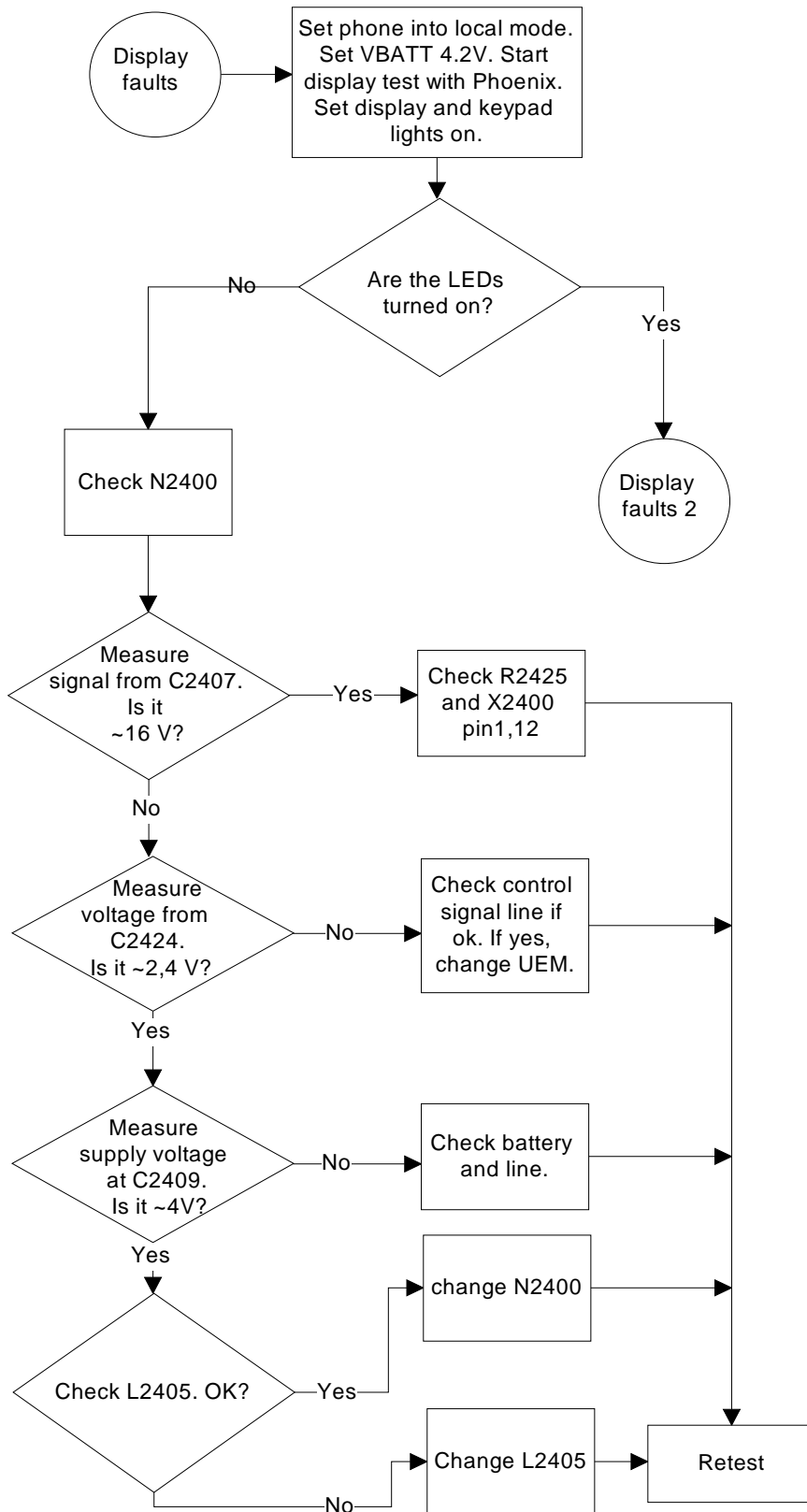
■ **Audio faults 4**



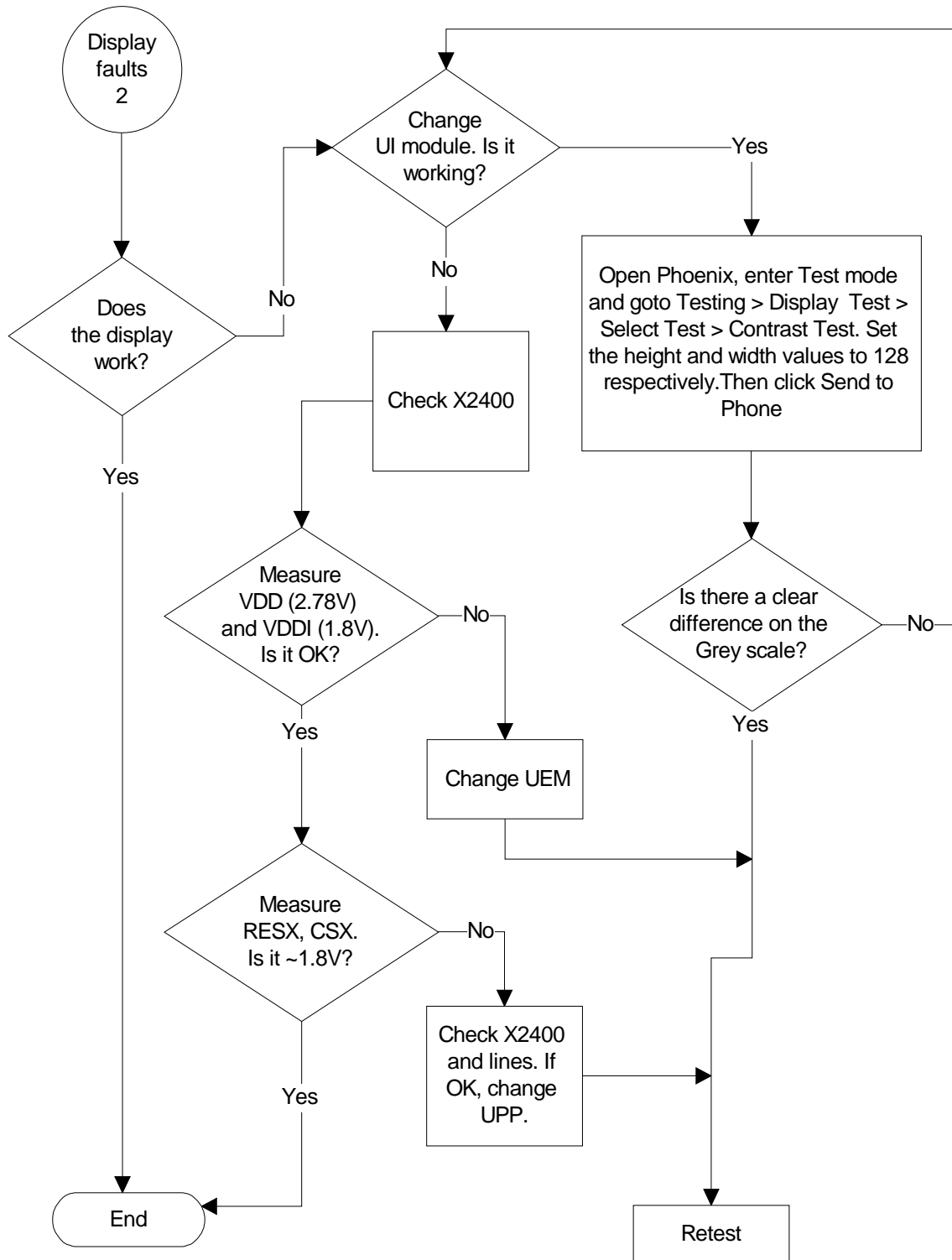
■ **Earpiece**



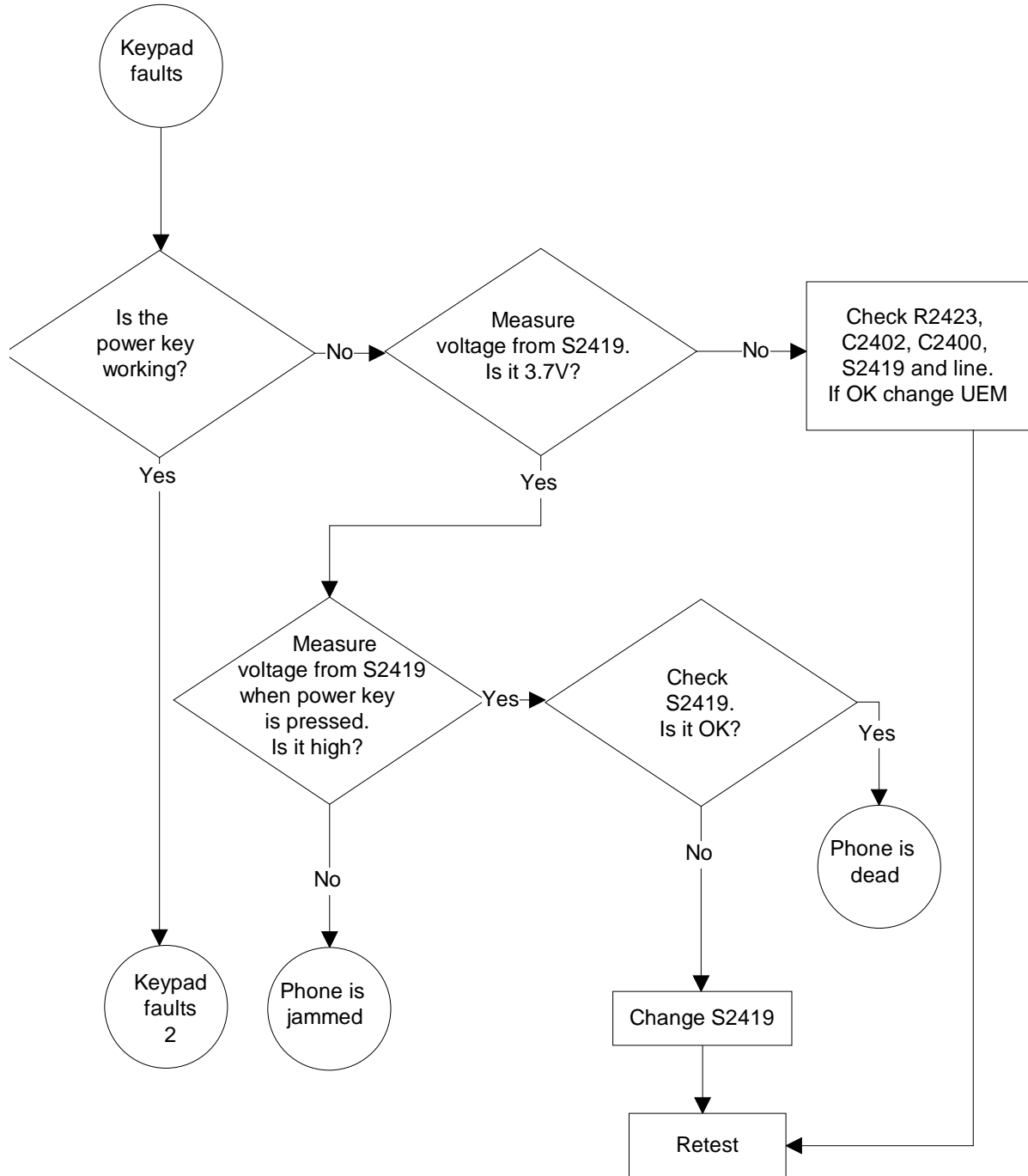
■ Display faults 1



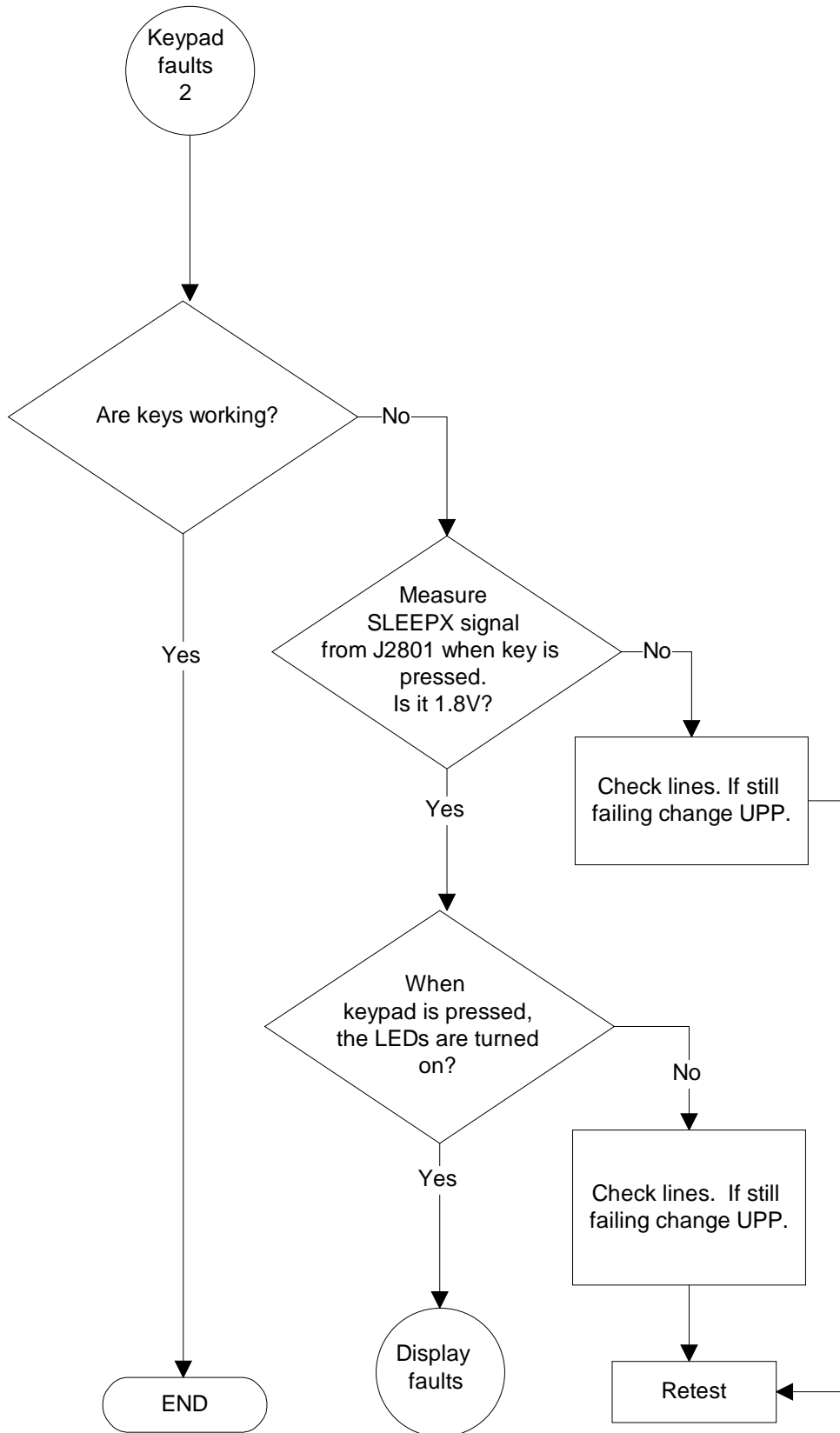
■ Display faults 2



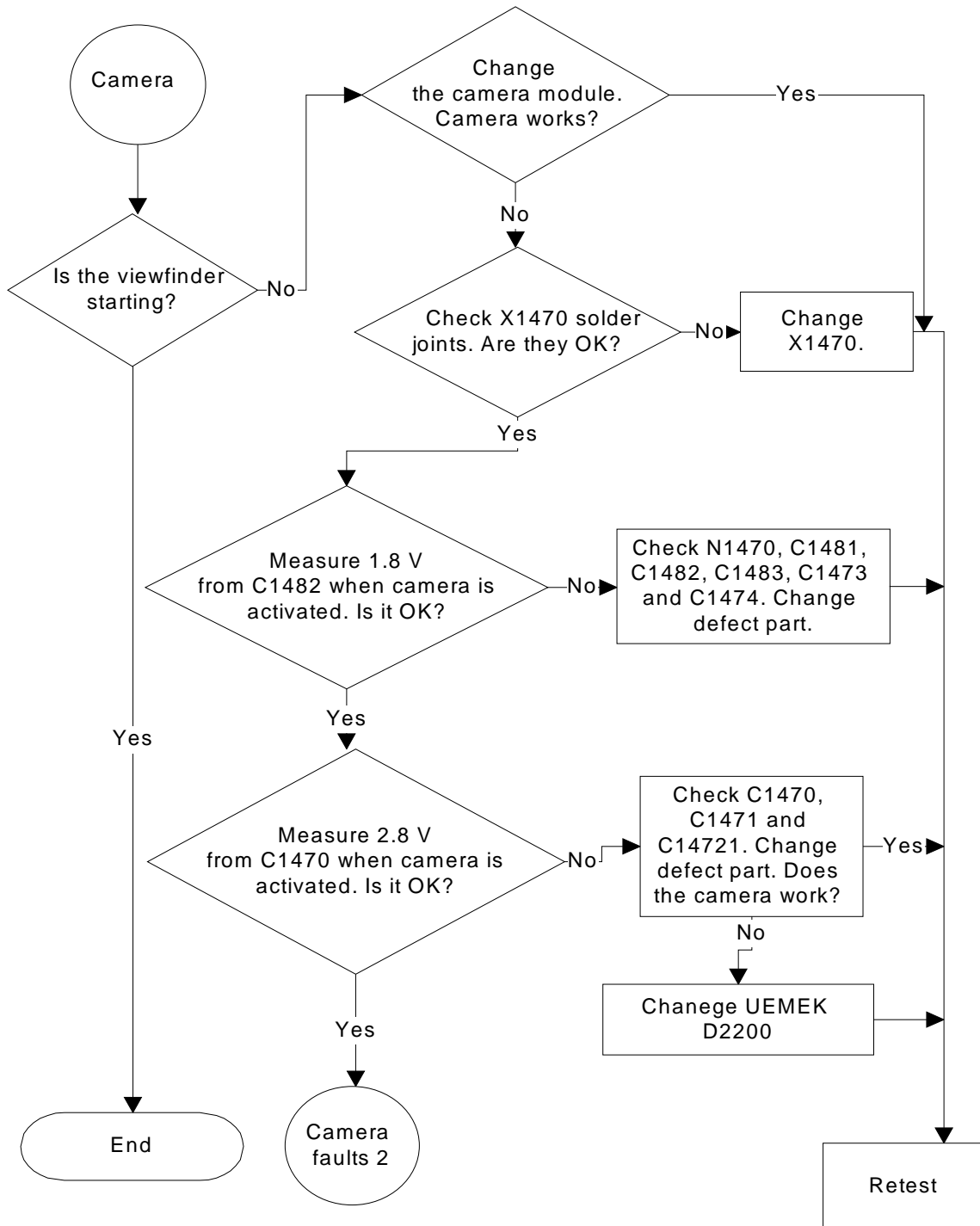
■ Keypad faults 1



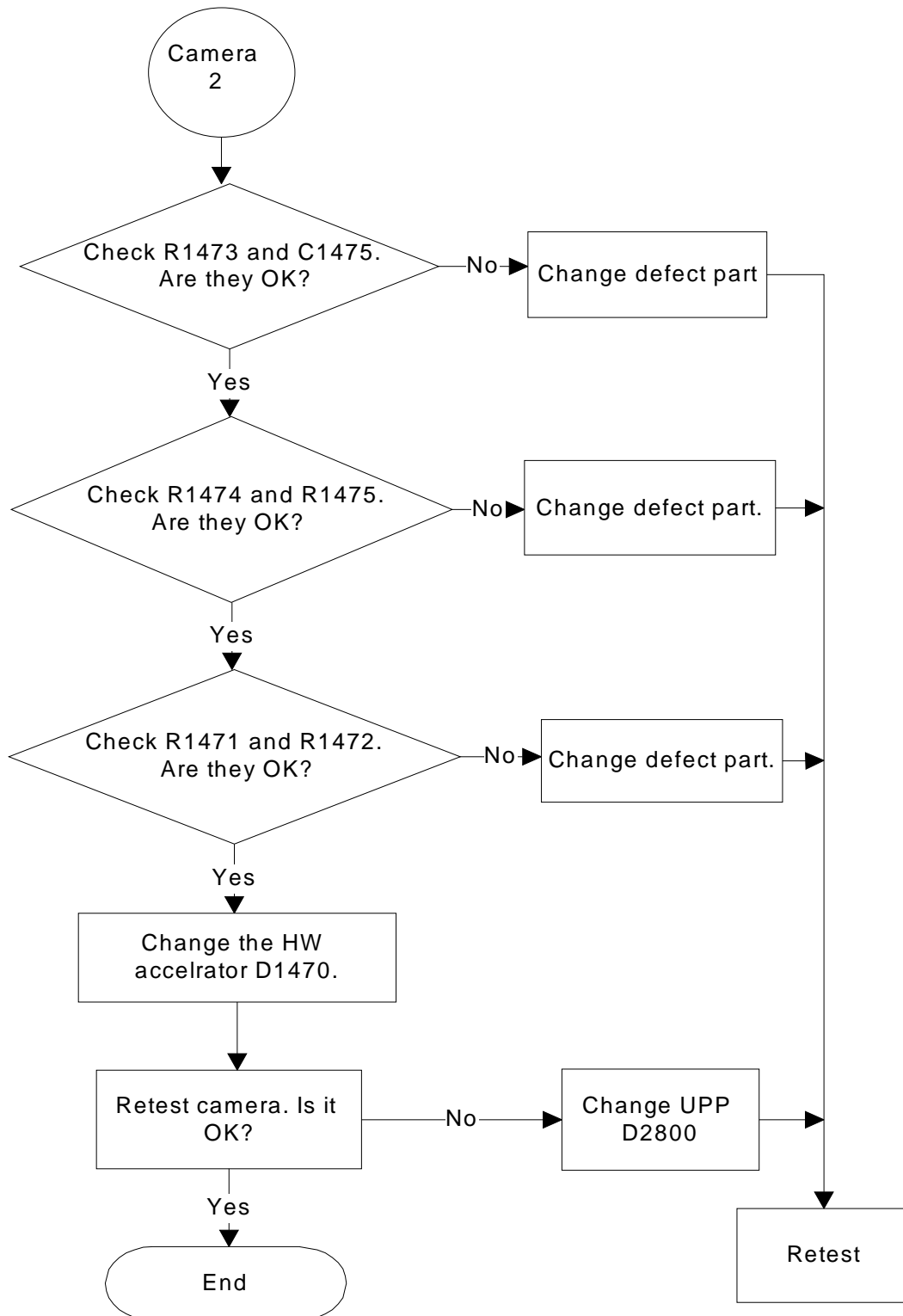
■ Keypad faults 2



■ **Camera faults 1**



■ **Camera faults 2**



■ **Self test**

